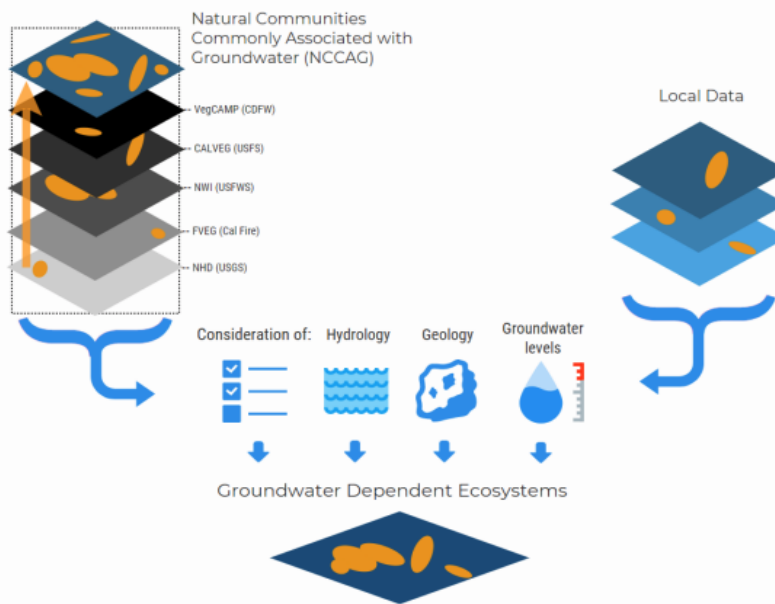




## IDENTIFYING GDEs UNDER SGMA

### Best Practices for using the NC Dataset

The Sustainable Groundwater Management Act (SGMA) requires that groundwater dependent ecosystems (GDEs) be identified in Groundwater Sustainability Plans (GSPs). As a starting point, the Department of Water Resources (DWR) is providing the Natural Communities Commonly Associated with Groundwater Dataset (NC Dataset) online<sup>1</sup> to help Groundwater Sustainability Agencies (GSAs), consultants, and stakeholders identify GDEs within individual groundwater basins. To apply information from the NC Dataset to local areas, GSAs should combine it with the best available science on local hydrology, geology, and groundwater levels to verify whether polygons in the NC dataset are likely supported by groundwater in an aquifer (Figure 1)<sup>2</sup>. This document highlights six best practices for using local groundwater data to confirm whether mapped features in the NC dataset are supported by groundwater.



**Figure 1. Considerations for GDE identification.**  
Source: DWR<sup>2</sup>

<sup>1</sup> NC Dataset Online Viewer: <https://gis.water.ca.gov/app/NCDataSetViewer/>

<sup>2</sup> California Department of Water Resources (DWR). 2018. Summary of the "Natural Communities Commonly Associated with Groundwater" Dataset and Online Web Viewer. Available at: <https://water.ca.gov/-/media/DWR-Website/Web-Pages/Programs/Groundwater-Management/Data-and-Tools/Files/Statewide-Reports/Natural-Communities-Dataset-Summary-Document.pdf>

The NC Dataset identifies vegetation and wetland features that are good indicators of a GDE. The dataset is comprised of 48 publicly available state and federal datasets that map vegetation, wetlands, springs, and seeps commonly associated with groundwater in California<sup>3</sup>. It was developed through a collaboration between DWR, the Department of Fish and Wildlife, and The Nature Conservancy (TNC). TNC has also provided detailed guidance on identifying GDEs from the NC dataset<sup>4</sup> on the Groundwater Resource Hub<sup>5</sup>, a website dedicated to GDEs.

### **BEST PRACTICE #1. Establishing a Connection to Groundwater**

Groundwater basins can be comprised of one continuous aquifer (Figure 2a) or multiple aquifers stacked on top of each other (Figure 2b). In unconfined aquifers (Figure 2a), using the depth-to-groundwater and the rooting depth of the vegetation is a reasonable method to infer groundwater dependence for GDEs. If groundwater is well below the rooting (and capillary) zone of the plants and any wetland features, the ecosystem is considered disconnected and groundwater management is not likely to affect the ecosystem (Figure 2d). However, it is important to consider local conditions (e.g., soil type, groundwater flow gradients, and aquifer parameters) and to review groundwater depth data from multiple seasons and water year types (wet and dry) because intermittent periods of high groundwater levels can replenish perched clay lenses that serve as the water source for GDEs (Figure 2c). Maintaining these natural groundwater fluctuations are important to sustaining GDE health.

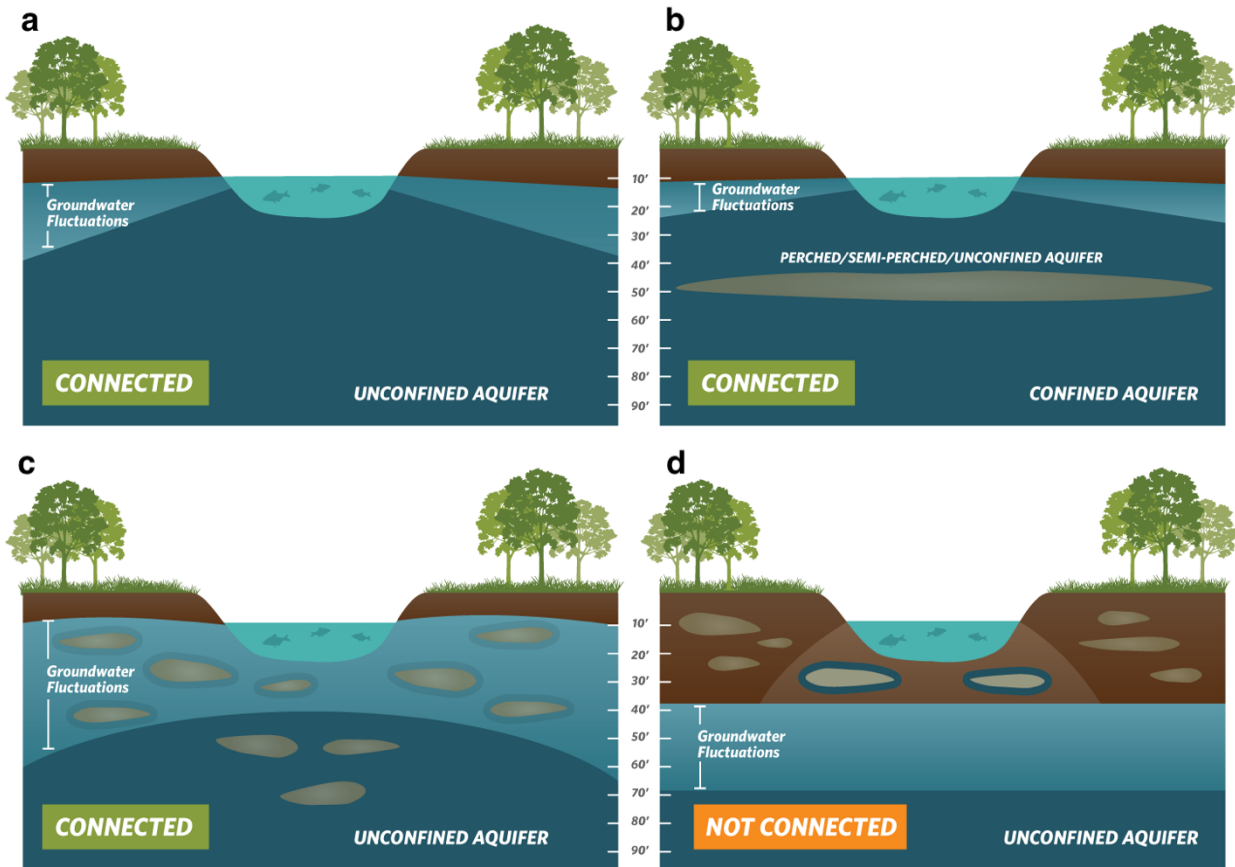
Basins with a stacked series of aquifers (Figure 2b) may have varying levels of pumping across aquifers in the basin, depending on the production capacity or water quality associated with each aquifer. If pumping is concentrated in deeper aquifers, SGMA still requires GSAs to sustainably manage groundwater resources in shallow aquifers, such as perched aquifers, that support springs, surface water, domestic wells, and GDEs (Figure 2). This is because vertical groundwater gradients across aquifers may result in pumping from deeper aquifers to cause adverse impacts onto beneficial users reliant on shallow aquifers or interconnected surface water. The goal of SGMA is to sustainably manage groundwater resources for current and future social, economic, and environmental benefits. While groundwater pumping may not be currently occurring in a shallower aquifer, use of this water may become more appealing and economically viable in future years as pumping restrictions are placed on the deeper production aquifers in the basin to meet the sustainable yield and criteria. Thus, identifying GDEs in the basin should be done irrespective to the amount of current pumping occurring in a particular aquifer, so that future impacts on GDEs due to new production can be avoided. A good rule of thumb to follow is: *if groundwater can be pumped from a well - it's an aquifer.*

---

<sup>3</sup> For more details on the mapping methods, refer to: Klausmeyer, K., J. Howard, T. Keeler-Wolf, K. Davis-Fadtke, R. Hull, A. Lyons. 2018. Mapping Indicators of Groundwater Dependent Ecosystems in California: Methods Report. San Francisco, California. Available at: [https://groundwaterresourcehub.org/public/uploads/pdfs/iGDE\\_data\\_paper\\_20180423.pdf](https://groundwaterresourcehub.org/public/uploads/pdfs/iGDE_data_paper_20180423.pdf)

<sup>4</sup> "Groundwater Dependent Ecosystems under the Sustainable Groundwater Management Act: Guidance for Preparing Groundwater Sustainability Plans" is available at: <https://groundwaterresourcehub.org/gde-tools/gsp-guidance-document/>

<sup>5</sup> The Groundwater Resource Hub: [www.GroundwaterResourceHub.org](http://www.GroundwaterResourceHub.org)



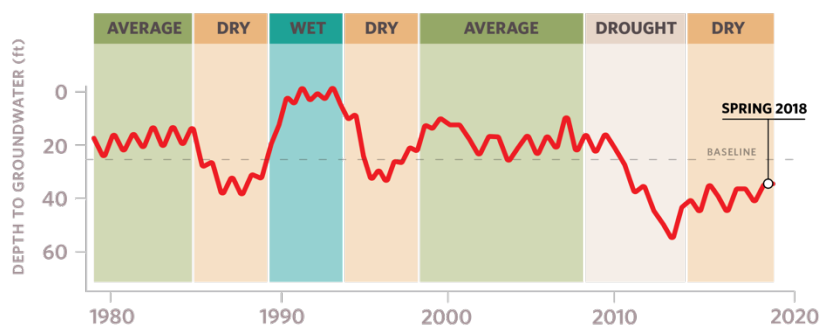
**Figure 2. Confirming whether an ecosystem is connected to groundwater. Top: (a)** Under the ecosystem is an unconfined aquifer with depth-to-groundwater fluctuating seasonally and interannually within 30 feet from land surface. **(b)** Depth-to-groundwater in the shallow aquifer is connected to overlying ecosystem. Pumping predominately occurs in the confined aquifer, but pumping is possible in the shallow aquifer. **Bottom: (c)** Depth-to-groundwater fluctuations are seasonally and interannually large, however, clay layers in the near surface prolong the ecosystem's connection to groundwater. **(d)** Groundwater is disconnected from surface water, and any water in the vadose (unsaturated) zone is due to direct recharge from precipitation and indirect recharge under the surface water feature. These areas are not connected to groundwater and typically support species that do not require access to groundwater to survive.

## BEST PRACTICE #2. Characterize Seasonal and Interannual Groundwater Conditions

SGMA requires GSAs to describe current and historical groundwater conditions when identifying GDEs [23 CCR §354.16(g)]. Relying solely on the SGMA benchmark date (January 1, 2015) or any other single point in time to characterize groundwater conditions (e.g., depth-to-groundwater) is inadequate because managing groundwater conditions with data from one time point fails to capture the seasonal and interannual variability typical of California’s climate. DWR’s Best Management Practices document on water budgets<sup>6</sup> recommends using 10 years of water supply and water budget information to describe how historical conditions have impacted the operation of the basin within sustainable yield, implying that a baseline<sup>7</sup> could be determined based on data between 2005 and 2015. Using this or a similar time period, depending on data availability, is recommended for determining the depth-to-groundwater.

GDEs depend on groundwater levels being close enough to the land surface to interconnect with surface water systems or plant rooting networks. The most practical approach<sup>8</sup> for a GSA to assess whether polygons in the NC dataset are connected to groundwater is to rely on groundwater elevation data. As detailed in TNC’s GDE guidance document<sup>4</sup>, one of the key factors to consider when mapping GDEs is to contour depth-to-groundwater in the aquifer that is supporting the ecosystem (see Best Practice #5).

Groundwater levels fluctuate over time and space due to California’s Mediterranean climate (dry summers and wet winters), climate change (flood and drought years), and subsurface heterogeneity in the subsurface (Figure 3). Many of California’s GDEs have adapted to dealing with intermittent periods of water stress, however if these groundwater conditions are prolonged, adverse impacts to GDEs can result. While depth-to-groundwater levels within 30 feet<sup>4</sup> of the land surface are generally accepted as being a proxy for confirming that polygons in the NC dataset are supported by groundwater, it is highly advised that fluctuations in the groundwater regime be characterized to understand the seasonal and interannual groundwater variability in GDEs. Utilizing groundwater data from one point in time can misrepresent groundwater levels required by GDEs, and inadvertently result in adverse impacts to the GDEs. Time series data on groundwater elevations and depths are available on the SGMA Data Viewer<sup>9</sup>. However, if insufficient data are available to describe groundwater conditions within or near polygons from the NC dataset, include those polygons in the GSP until data gaps are reconciled in the monitoring network (see Best Practice #6).



**Figure 3. Example seasonality and interannual variability in depth-to-groundwater over time.** Selecting one point in time, such as Spring 2018, to characterize groundwater conditions in GDEs fails to capture what groundwater conditions are necessary to maintain the ecosystem status into the future so adverse impacts are avoided.

<sup>6</sup> DWR. 2016. Water Budget Best Management Practice. Available at:

[https://water.ca.gov/LegacyFiles/groundwater/sqm/pdfs/BMP\\_Water\\_Budget\\_Final\\_2016-12-23.pdf](https://water.ca.gov/LegacyFiles/groundwater/sqm/pdfs/BMP_Water_Budget_Final_2016-12-23.pdf)

<sup>7</sup> Baseline is defined under the GSP regulations as “historic information used to project future conditions for hydrology, water demand, and availability of surface water and to evaluate potential sustainable management practices of a basin.” [23 CCR §351(e)]

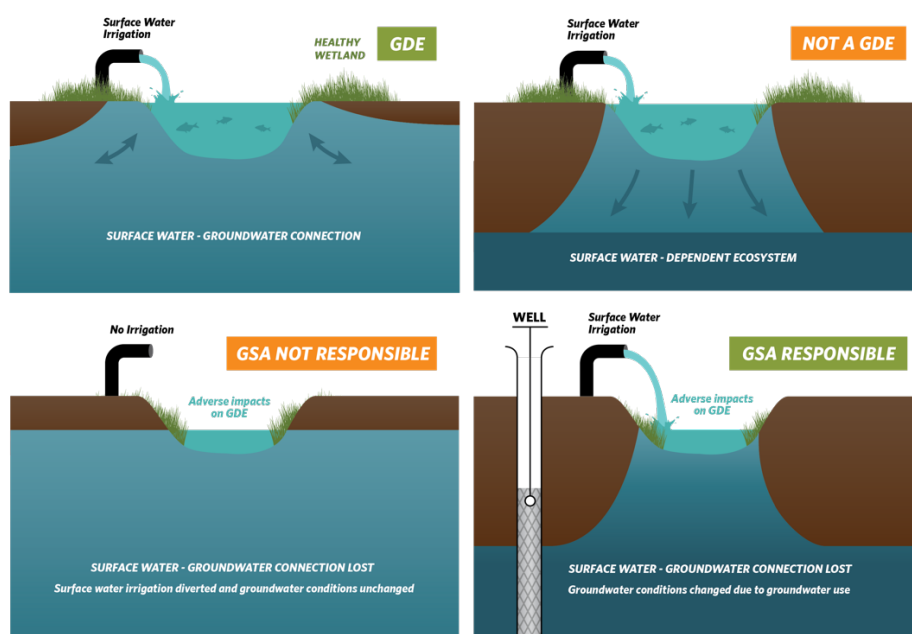
<sup>8</sup> Groundwater reliance can also be confirmed via stable isotope analysis and geophysical surveys. For more information see The GDE Assessment Toolbox (Appendix IV, GDE Guidance Document for GSPs<sup>4</sup>).

<sup>9</sup> SGMA Data Viewer: <https://sgma.water.ca.gov/webgis/?appid=SGMADataViewer>

### BEST PRACTICE #3. Ecosystems Often Rely on Both Groundwater and Surface Water

GDEs are plants and animals that rely on groundwater for all or some of its water needs, and thus can be supported by multiple water sources. The presence of non-groundwater sources (e.g., surface water, soil moisture in the vadose zone, applied water, treated wastewater effluent, urban stormwater, irrigated return flow) within and around a GDE does not preclude the possibility that it is supported by groundwater, too. SGMA defines GDEs as "ecological communities and species that depend on groundwater emerging from aquifers or on groundwater occurring near the ground surface" [23 CCR §351(m)]. Hence, depth-to-groundwater data should be used to identify whether NC polygons are supported by groundwater and should be considered GDEs. In addition, SGMA requires that significant and undesirable adverse impacts to beneficial users of surface water be avoided. Beneficial users of surface water include environmental users such as plants or animals<sup>10</sup>, which therefore must be considered when developing minimum thresholds for depletions of interconnected surface water.

GSAs are only responsible for impacts to GDEs resulting from groundwater conditions in the basin, so if adverse impacts to GDEs result from the diversion of applied water, treated wastewater, or irrigation return flow away from the GDE, then those impacts will be evaluated by other permitting requirements (e.g., CEQA) and may not be the responsibility of the GSA. However, if adverse impacts occur to the GDE due to changing groundwater conditions resulting from pumping or groundwater management activities, then the GSA would be responsible (Figure 4).



**Figure 4. Ecosystems often depend on multiple sources of water. Top: (Left)** Surface water and groundwater are interconnected, meaning that the GDE is supported by both groundwater and surface water. **(Right)** Ecosystems that are only reliant on non-groundwater sources are not groundwater-dependent. **Bottom: (Left)** An ecosystem that was once dependent on an interconnected surface water, but loses access to groundwater solely due to surface water diversions may not be the GSA's responsibility. **(Right)** Groundwater dependent ecosystems once dependent on an interconnected surface water system, but loses that access due to groundwater pumping is the GSA's responsibility.

<sup>10</sup> For a list of environmental beneficial users of surface water by basin, visit: <https://groundwaterresourcehub.org/gde-tools/environmental-surface-water-beneficiaries/>

#### BEST PRACTICE #4. Select Representative Groundwater Wells

Identifying GDEs in a basin requires that groundwater conditions are characterized to confirm whether polygons in the NC dataset are supported by the underlying aquifer. To do this, proximate groundwater wells should be identified to characterize groundwater conditions (Figure 5). When selecting representative wells, it is particularly important to consider the subsurface heterogeneity around NC polygons, especially near surface water features where groundwater and surface water interactions occur around heterogeneous stratigraphic units or aquitards formed by fluvial deposits. The following selection criteria can help ensure groundwater levels are representative of conditions within the GDE area:

- Choose wells that are within 5 kilometers (3.1 miles) of each NC Dataset polygons because they are more likely to reflect the local conditions relevant to the ecosystem. If there are no wells within 5km of the center of a NC dataset polygon, then there is insufficient information to remove the polygon based on groundwater depth. Instead, it should be retained as a potential GDE until there are sufficient data to determine whether or not the NC Dataset polygon is supported by groundwater.
- Choose wells that are screened within the surficial unconfined aquifer and capable of measuring the true water table.
- Avoid relying on wells that have insufficient information on the screened well depth interval for excluding GDEs because they could be providing data on the wrong aquifer. This type of well data should not be used to remove any NC polygons.

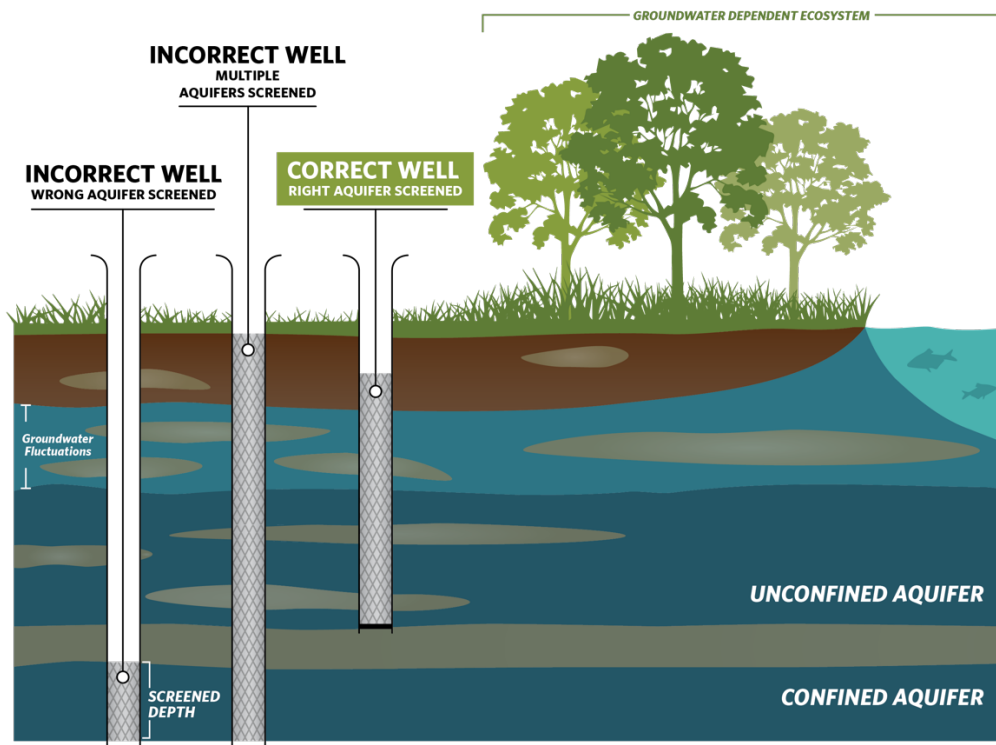
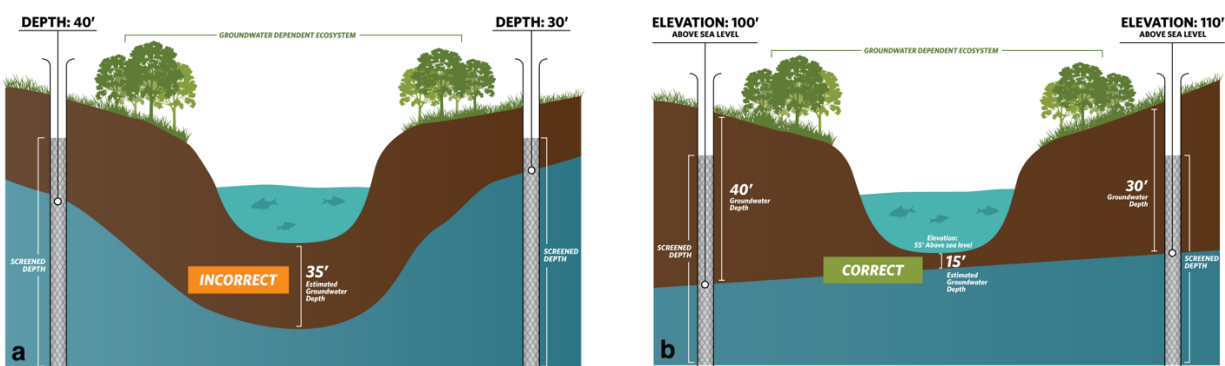


Figure 5. Selecting representative wells to characterize groundwater conditions near GDEs.

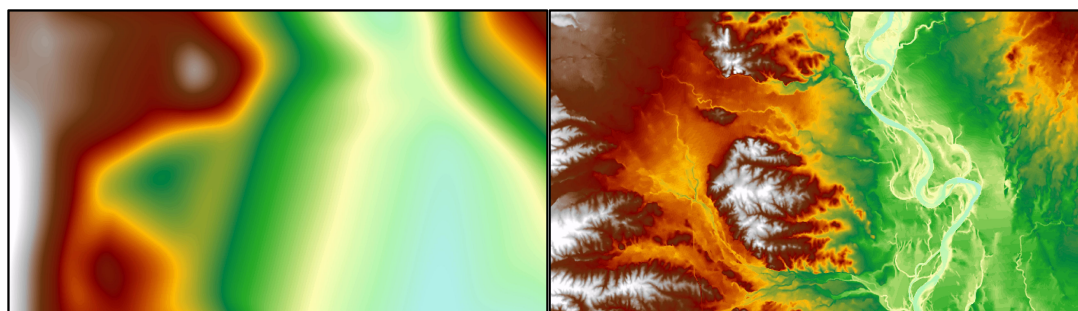


## BEST PRACTICE #5. Contouring Groundwater Elevations

The common practice to contour depth-to-groundwater over a large area by interpolating measurements at monitoring wells is unsuitable for assessing whether an ecosystem is supported by groundwater. This practice causes errors when the land surface contains features like stream and wetland depressions because it assumes the land surface is constant across the landscape and depth-to-groundwater is constant below these low-lying areas (Figure 6a). A more accurate approach is to interpolate **groundwater elevations** at monitoring wells to get groundwater elevation contours across the landscape. This layer can then be subtracted from land surface elevations from a Digital Elevation Model (DEM)<sup>11</sup> to estimate depth-to-groundwater contours across the landscape (Figure b; Figure 7). This will provide a much more accurate contours of depth-to-groundwater along streams and other land surface depressions where GDEs are commonly found.



**Figure 6. Contouring depth-to-groundwater around surface water features and GDEs. (a)** Groundwater level interpolation using depth-to-groundwater data from monitoring wells. **(b)** Groundwater level interpolation using groundwater elevation data from monitoring wells and DEM data.



**Figure 7. Depth-to-groundwater contours in Northern California. (Left)** Contours were interpolated using depth-to-groundwater measurements determined at each well. **(Right)** Contours were determined by interpolating groundwater elevation measurements at each well and superimposing ground surface elevation from DEM spatial data to generate depth-to-groundwater contours. The image on the right shows a more accurate depth-to-groundwater estimate because it takes the local topography and elevation changes into account.

<sup>11</sup> USGS Digital Elevation Model data products are described at: <https://www.usgs.gov/core-science-systems/nep/3dep/about-3dep-products-services> and can be downloaded at: <https://iewer.nationalmap.gov/basic/>

## BEST PRACTICE #6. Best Available Science

Adaptive management is embedded within SGMA and provides a process to work toward sustainability over time by beginning with the best available information to make initial decisions, monitoring the results of those decisions, and using the data collected through monitoring programs to revise decisions in the future. In many situations, the hydrologic connection of NC dataset polygons will not initially be clearly understood if site-specific groundwater monitoring data are not available. If sufficient data are not available in time for the 2020/2022 plan, **The Nature Conservancy strongly advises that questionable polygons from the NC dataset be included in the GSP until data gaps are reconciled in the monitoring network.** Erring on the side of caution will help minimize inadvertent impacts to GDEs as a result of groundwater use and management actions during SGMA implementation.

### KEY DEFINITIONS

**Groundwater basin** is an aquifer or stacked series of aquifers with reasonably well-defined boundaries in a lateral direction, based on features that significantly impede groundwater flow, and a definable bottom. *23 CCR §341(g)(1)*

**Groundwater dependent ecosystem (GDE)** are ecological communities or species that depend on groundwater emerging from aquifers or on groundwater occurring near the ground surface. *23 CCR §351(m)*

**Interconnected surface water (ISW)** surface water that is hydraulically connected at any point by a continuous saturated zone to the underlying aquifer and the overlying surface water is not completely depleted. *23 CCR §351(o)*

**Principal aquifers** are aquifers or aquifer systems that store, transmit, and yield significant or economic quantities of groundwater to wells, springs, or surface water systems. *23 CCR §351(aa)*

### ABOUT US

The Nature Conservancy is a science-based nonprofit organization whose mission is *to conserve the lands and waters on which all life depends*. To support successful SGMA implementation that meets the future needs of people, the economy, and the environment, TNC has developed tools and resources ([www.groundwaterresourcehub.org](http://www.groundwaterresourcehub.org)) intended to reduce costs, shorten timelines, and increase benefits for both people and nature.